

# Quality of Life in Metropolitan Athens Using Satellite and Census Data: Comparison Between 1991 and 2001

*Marina Stathopoulou\*, Stefanos Iacovides and Constantinos Cartalis  
Department of Environmental Physics and Meteorology, University of Athens,  
Athens, Greece*

*\*Corresponding author email: mstathop@phys.uoa.gr*

## ABSTRACT

This study presents an aggregated quality of life (QOL) index representing the combined attributes of the physical, economic and social environment of a city. Information about the physical environment was derived from Landsat TM/ETM+ image data, whereas information regarding the socio-economic environment of the city was obtained from national census data. In particular, the indicators used to describe the physical environment were land surface temperature (LST), vegetation and land cover and use. On the other hand, the indicators used to describe the socio-economic environment of the city were population density, education level, unemployment rate, percentage of employers and household density. The QOL index was calculated at a municipality level by integrating all indicators mentioned above in a GIS environment.

The QOL index was applied to measure the quality of life in the city of Athens, Greece and to assess changes over the decade 1991 - 2001. It is concluded that the QOL index can be a valuable tool for urban design, as it may provide urban planners and local administrators a broad overview of trends, identifying communities where further actions for sustainable development are needed.

## Introduction

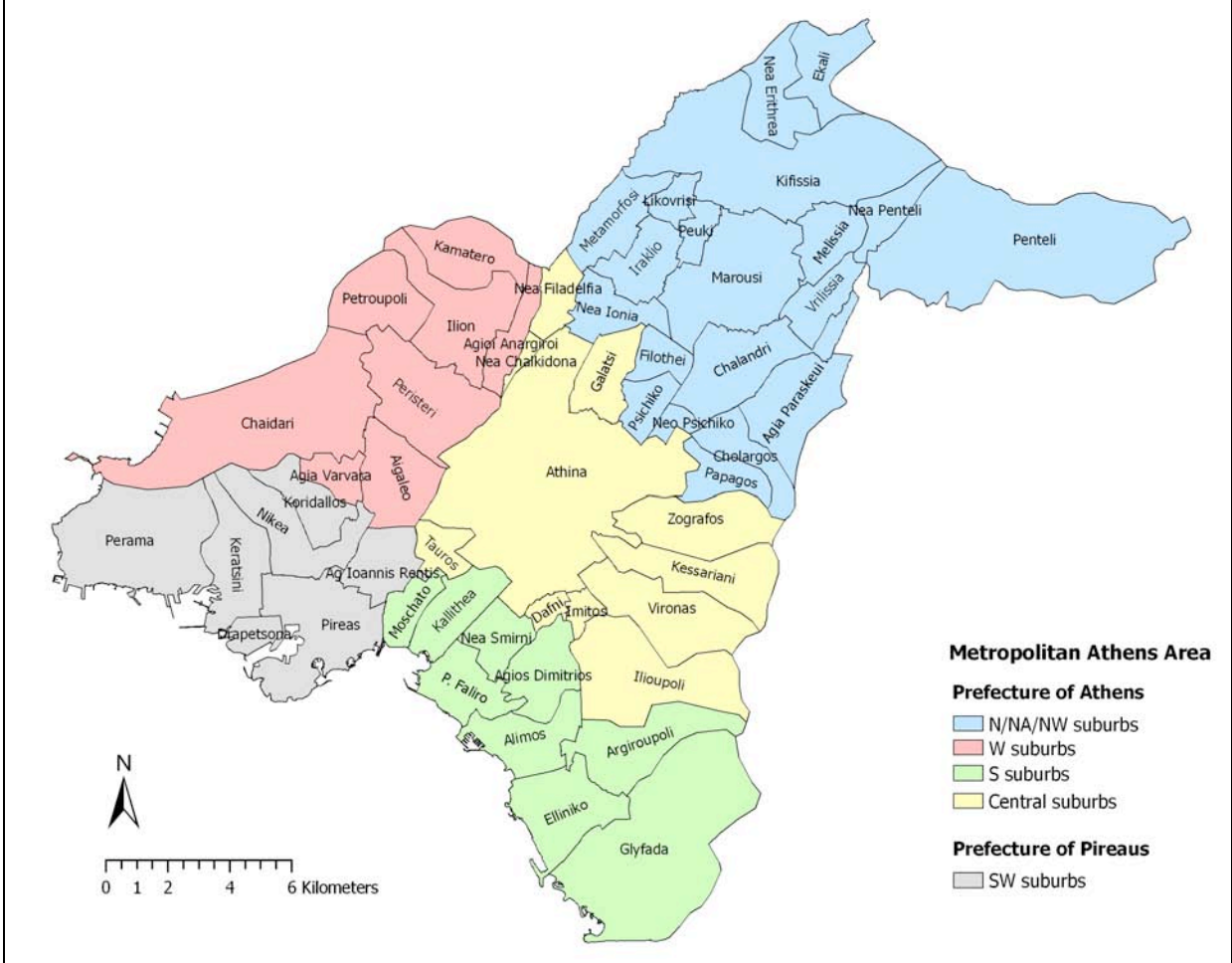
The term *quality of life* (QOL) is used to describe the wellbeing of the citizens of an urban area, that is to say how people feel about the environment and the society in which they live. Most sociologists believe that quality of life is reflects both objective and subjective elements. For example, employment is an objective criterion, however how satisfied people are about their work is clearly subjective. For defining QOL, a number of indicators are commonly used representing the most important aspects in the life of a person, such as education, employment or the state of the physical environment. Generally, it has been observed that there are some commonly acceptable indicators that are used for expressing the urban QOL, classified into two main categories i) the physical and ii) the socio-economic environment. In the past, most studies of QOL were conducted on the basis of only census data. With the systematic degradation of the physical environment, the incorporation of physical data in the QOL index is required so as to depict in a more adequate way the findings of a QOL study for a city. Moreover, the frequent evaluation of the life quality in a city is very important, as it enables the monitoring of progress as well as it provides information to local authorities on the policy they could deliver so as to resolve or even anticipate problems of the community arising from poor strategy for sustainable design in an urban area.

The scope of this study is to measure the quality of life in the urban environment of the metropolitan Athens area, which consists of the prefecture of Athens (48 municipalities) and part of the prefecture of Piraeus (7 municipalities covering the SW part of the Attica

basin). To achieve this, we developed a QOL index, based on the Atlas of Canada quality of life model (Quality of Life Indicators Project 2002; Morton 1999), which aggregates the physical, economic and social characteristics of an urban area at a municipality level. The index was initially calculated for 1991 and 2001 and then changes in QOL over the 1991-2001 decade were detected for Athens. The physical environment indicators were derived from high-resolution Landsat TM/ETM+ image data, with land cover information for Athens extracted from the Corine Land Cover (CLC) databases for Greece which were provided in vector format for the reference years 1990 and 2000. The socio-economic indicators were obtained from the 1991 and 2001 Greek census data at the municipality level.

The metropolitan Athens area is the central part of the Attica region. It is delimited by the mountains of Parnitha, Ymittos, Penteli, Aigaleo and the Saronikos Gulf, covering the Attica basin of 415 km<sup>2</sup> area and having a population of 3,130,841 inhabitants (2001 census) which is nearly 1/3 of the total population of Greece (28.5%). The population density reported for the prefecture of Athens is 7.4 inhabitants/km<sup>2</sup>, whereas for the 7 mainland municipalities of the prefecture of Piraeus the population density is even higher, reaching up to 9.2 inhabitants/km<sup>2</sup>. Figure 1 shows the 55 municipalities consisting the metropolitan Athens area.

**Figure 1. Vector Map of Municipalities in Metropolitan Athens Area.**



**Dataset**

Two Landsat images were employed in this study: a Landsat 5 TM image dated on June 21, 1991 and a Landsat 7 ETM+ image dated on August 11, 2001. TM and ETM+

sensors can provide image data in the visible (VIS) and thermal infrared (TIR) spectral region. The TIR band (band 6) on both sensors operates in the spectral range of 10.4 – 12.5  $\mu\text{m}$  and is designed to record image data with high spatial resolution (120m for TM and 60m for ETM+) suitable for detecting and mapping the land surface temperature (LST) variations at the city scale. Moreover, the high spatial resolution of both sensors (30m) in the VIS (0.45 – 0.69  $\mu\text{m}$ ) and near-infrared (NIR) (0.76 - 0.90  $\mu\text{m}$ ) spectral regions, makes them suitable for measuring the urban vegetation with the use of the NDVI (Normalized Difference Vegetation Index). The image data were acquired via the USGS EROS Data Center to a processing level of 1G with georeferencing to UTM/WGS84 map projection.

To better comprehend the urban characteristics of the area under study, the thematic land-cover and land-use (LULC) data from the CORINE Land Cover (CLC) database for Greece were utilized. In particular, two CLC databases were employed; the first one referring to 1990 and its update for the year 2000 (thereafter denoted as CLC90 and CLC00, respectively). These databases are part of the CORINE program proposed by the European Commission in 1985 with the aim to COoRdinate INformation on the Environment (CORINE). At present, the CLC database covers more than 30 countries mapping the European environmental landscape with 44 thematic classes at the 1:100,000 scale. CLC90 and CLC00 for Greece were provided in a vector format.

Finally, location and boundaries of the municipalities consisting the metropolitan Athens area were available from a vector (shapefile) map.

## Methodology

### Extraction of the Physical Environment Indicators

**Land surface temperature.** Estimation of LST from satellite thermal data required conversion of the digital number (DN) of the image pixels into a) at-sensor spectral radiance  $L_\lambda$  and b) effective at-sensor temperature  $T_B$ , using the sensor calibration data. The equations applied to the thermal band (band 6) image pixels for converting into at-sensor spectral radiance values were (Chander & Markham 2003):

$$\text{For TM6 band: } L_\lambda = 0.055158 \cdot DN + 1.2378 \quad \text{W}/(\text{m}^2 \cdot \text{sr} \cdot \mu\text{m}) \quad (1)$$

$$\text{For ETM+6 band: } L_\lambda = 0.066824 \cdot DN + 0.0 \quad \text{W}/(\text{m}^2 \cdot \text{sr} \cdot \mu\text{m}) \quad (2)$$

For Landsat TM/ETM+, conversion from at-sensor spectral radiance values into effective at-sensor temperature values was accomplished by:

$$T_B = \frac{K_2}{\ln\left(\frac{K_1}{L_\lambda} + 1\right)} \quad (3)$$

where  $T_B$  is the effective at-sensor temperature in degrees Kelvin,  $K_1$  is the 1<sup>st</sup> calibration constant in  $\text{W}/(\text{m}^2 \cdot \text{sr} \cdot \mu\text{m})$  equal to 607.76 for TM and 666.09 for ETM+, whereas  $K_2$  is the 2<sup>nd</sup> calibration constant in Kelvin equal to 1260.56 for TM and 1282.71 for ETM+. Finally, LST was estimated from the effective at-sensor temperature after correcting for surface emissivity (Artis and Carnahan, 1982):

$$LST = \frac{T_B}{\left(1 + \frac{\lambda \cdot T_B}{\rho} \ln \varepsilon\right)} \quad (4)$$

In equation (4),  $\lambda$  is the wavelength of emitted radiance (11.5  $\mu\text{m}$ ),  $\rho = hc/K$  ( $1.438 \times 10^{-2}$  m K),  $T_B$  is the effective at-sensor temperature in Kelvin and  $\varepsilon$  is the spectral surface emissivity. In this study, a surface emissivity value of 0.93 was used representing the mean surface emissivity of urbanized areas in Athens (Stathopoulou, Cartalis & Petrakis 2007). LST was regarded as a negative indicator of the physical environment of Athens, as previous studies have shown that high LST values have a negative impact on urban climatology (Stathopoulou & Cartalis 2007), increase human thermal discomfort (Stathopoulou et al., 2005) and energy demand (Santamouris et al. 2001; Stathopoulou, Cartalis & Chrysoulakis 2006).

**Vegetation.** The Normalized Difference Vegetation Index (NDVI) was calculated from both 1991 and 2001 images so as the amount of vegetation present in the study area was determined for the two years. Generally, its calculation is accomplished by a simple equation using two satellite bands; one band in the VIS region (for example TM/ETM+ band 3) and one in the NIR region (for example TM/ETM+ band 4). Prior to NDVI calculation, the DN values of the image pixels of TM/ETM+ bands 3 and 4 were converted to spectral radiance according to equations (1) or (2) and then to at-sensor spectral reflectance  $\rho_\lambda$  applying the following equation:

$$\tilde{n}_\lambda = \left( \frac{\partial \cdot L_\lambda \cdot d^2}{ESUN_\lambda \cdot \cos \theta_s} \right) \quad (5)$$

where  $L_\lambda$  is the at-sensor spectral radiance as computed from equation (1) or (2),  $d$  is the mean distance between the Earth and the Sun (in astronomical units),  $ESUN_\lambda$  is the mean solar exoatmospheric irradiance in TM/ETM+ bands 3 and 4 ( $\text{W}/\text{m}^2 \mu\text{m}$ ) and  $\theta_s$  is the solar zenith angle (in radians). The reason is that when comparing images from different sensors, there are two advantages to using reflectance instead of radiances. First, the cosine effect of different solar zenith angles due to the time difference between data acquisitions can be removed, and second, it compensates for different values of the exoatmospheric solar irradiances arising from spectral band differences (Chander & Markham 2003). The  $ESUN_\lambda$ ,  $d$  and  $\theta_s$  values for the two TM/ETM+ images were given in the images header files. Therefore, the equation applied to calculate NDVI was:

$$NDVI = \frac{\rho_4 - \rho_3}{\rho_4 + \rho_3} \quad (6)$$

Vegetation was regarded a positive indicator of the physical environment of metropolitan Athens as it can provide many aesthetic and environmental benefits to the citizens.

**Land cover and land use (LCLU).** In a GIS environment, the geographical region covering the study area was initially extracted from the CLC90 and CLC00 databases for Greece. Within the study area, the following categories of land cover and land uses were identified: a) continuous urban fabric b) discontinuous urban fabric c) industrial/commercial units d)

road/rail networks & associated land e) port areas f) airports g) mineral extraction sites h) dump sites i) construction sites j) green urban areas k) sport & leisure facilities l) agricultural areas and m) forests & semi-natural areas. These categories were grouped into 6 new ones named as:

1. Urban fabric (including continuous and discontinuous urban fabric)
2. Artificial non-agricultural vegetated areas (including green urban areas, sport & leisure facilities)
3. Urban use areas (including industrial/commercial units, road/rail networks & associated land, port areas, airports, mineral extraction sites, dump and construction sites)
4. Agricultural areas
5. Forests and semi-natural areas
6. Water surfaces

The category of “urban use areas” was regarded as a negative indicator of the physical environment of Athens as most citizens believe that the location of such infrastructures within their municipality leads to the deterioration of their quality of life. Therefore, the percentage of urban use areas corresponding to each municipality was estimated for 1991 and 2001 by dividing the land area (in m<sup>2</sup>) covered by urban use to the total area of each municipality. The spatial distribution of the different land cover types over the metropolitan Athens area for 1991 and 2001 is illustrated in Figure 2.

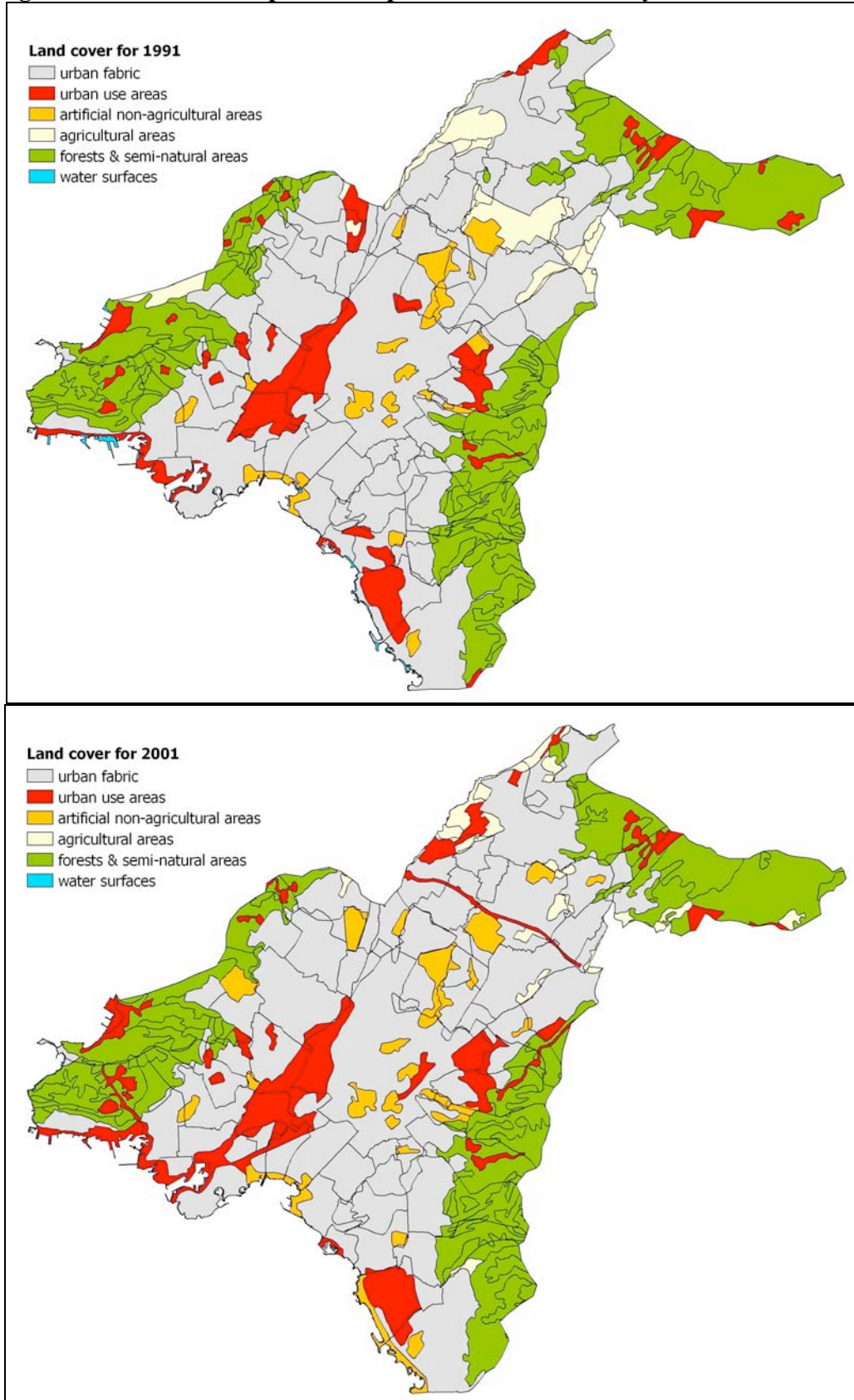
### **Extraction of the Socio-economic Indicators**

The socio-economic indicators used for describing the living environment of metropolitan Athens for 1991 and 2001 were: population density (citizens/km<sup>2</sup>), education level (defined as the percentage of graduates from higher educational and technical institutions), unemployment rate, percentage of employers and household density (households/km<sup>2</sup>). All indicator data were obtained from the 1991 and 2001 census data supplied by the General Secretariat of National Statistical Service of Greece ([www.statistics.gr](http://www.statistics.gr)) at a municipality level. Each indicator was characterized as positive or negative based on its impact on the quality of life. From this point of view, the education level and the employers rate were considered as positive indicators, whereas the population density, the unemployment rate and the household density were considered as negative ones.

### **Extraction of the Quality of Life Index**

Firstly, the municipality vector map was overlaid to the LST, NDVI and LCLU maps for 1991 and 2001 and mean values of LST and NDVI as well as the urban use percentage were calculated per municipality. These values were then integrated with the values of the socio-economic indicators as attributes of the municipality vector map in a GIS. For fair comparison between QOL in 1991 and 2001, all indicator values were normalized into the range 0 to 1. In

**Figure 2. Land cover map of metropolitan Athens for the years 1991 and 2001**



case of a positive indicator, for example vegetation, the value of 0 indicated the least positive influence on the QOL of citizens - practically implying a negative impact on QOL - whereas the value of 1 represented the most positive influence on the QOL. Likewise, in case of a

negative indicator such as the unemployment rate, the value of 1 indicated the worst influence on QOL in contrast to the value of 0 which implied the least negative impact on QOL. Following normalization and on the basis of the hypothesis that all indicators equally affect QOL, all indicator values were added up resulting in a QOL score for each municipality, which was further classified into 5 levels of QOL: low, fair, moderate, good and high.

## **Results and conclusions**

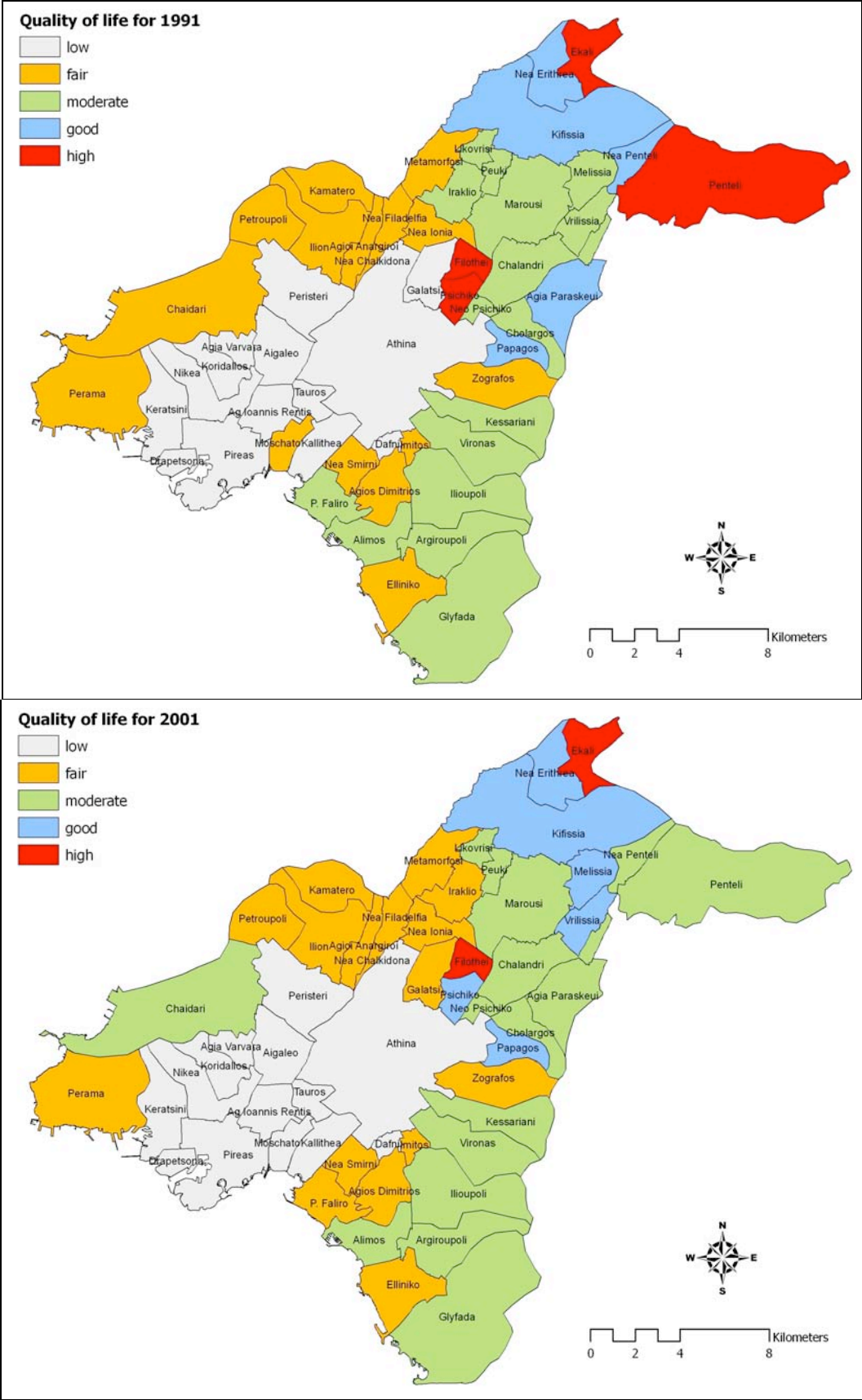
Figure 3 shows the quality of life for the 55 municipalities/communities of the Athens metropolitan area for the years 1991 and 2001, respectively. By examining Figure 3 it can be observed that, in 1991, most municipalities were characterized by a fair and moderate life quality, with the good and high QOL levels recorded mainly at the municipalities of the N/NA/NW suburbs of the prefecture of Athens. In particular, fourteen municipalities displayed a low QOL, sixteen municipalities displayed a fair QOL, sixteen municipalities displayed a moderate QOL, five municipalities displayed a good QOL and four municipalities displayed a high QOL. The municipalities placed in the N/NA/NW suburbs of the prefecture of Athens presented moderate to high QOL levels, the municipalities at the central and S suburbs of the prefecture of Athens presented low to moderate QOL levels, whereas the municipalities of the W suburbs of the prefecture of Athens as well as of the SW suburbs of the prefecture of Piraeus presented low to fair QOL. The lower QOL score was measured for the municipality of Drapetsona, whereas the higher QOL score was measured for the municipality of Ekali.

In 2001, most municipalities were characterized by a fair QOL followed by a moderate QOL, whereas the number of municipalities experiencing a good and high QOL was found to have decreased by one compared to 1991. In particular, in 2001, fourteen municipalities presented a low QOL, seventeen municipalities presented a fair QOL, sixteen municipalities presented a moderate QOL, six municipalities were characterized by a good QOL and only two presented a high QOL. Moderate to high QOL levels were associated with municipalities mainly of the northern and eastern parts of metropolitan Athens, whereas low and fair QOL levels were observed at the central and W suburbs of the prefecture of Athens as well as at the SW suburbs of the prefecture of Piraeus. The lower QOL score was measured for the municipality of Agios Ioannis Rentis, whereas the higher QOL score was measured again for the municipality of Ekali.

From Figure 4, it can be said that most of the changes in life quality between 1991 and 2001 occurred at municipalities placed in the N/NA/NW suburbs of Athens, whereas limited or no QOL changes were observed for municipalities of the central, S and W suburbs of Athens as well as of the SW suburbs of Piraeus. It must be noted, that municipalities with fair QOL did not present significant changes in quality of life between 1991 and 2001. The only exception was the municipality of Galatsi, which improved its QOL from low in 1991 to fair in 2001. During the decade, Galatsi presented an increasing trend in the education level and a decreasing trend in the unemployment rate, percentage of urban use and LST. These variations prevailed against the decreasing trends in the population and household density, thus resulting in an improved QOL for Galatsi in 2001 than 1991. The data used for measuring the QOL in Penteli, revealed a noticeable increase in the unemployment rate with a significant decrease in NDVI and increase in LST. These NDVI and LST changes were attributed to two forest fires that occurred in the summer of 1995 and 1999 respectively, which damaged tens of forest landscape in the area. This great damage led to the decrease in NDVI and at the same time to a significant increase in LST, thus degrading the life quality of the municipality from high to moderate. In regard of the municipality of Psychiko, it was

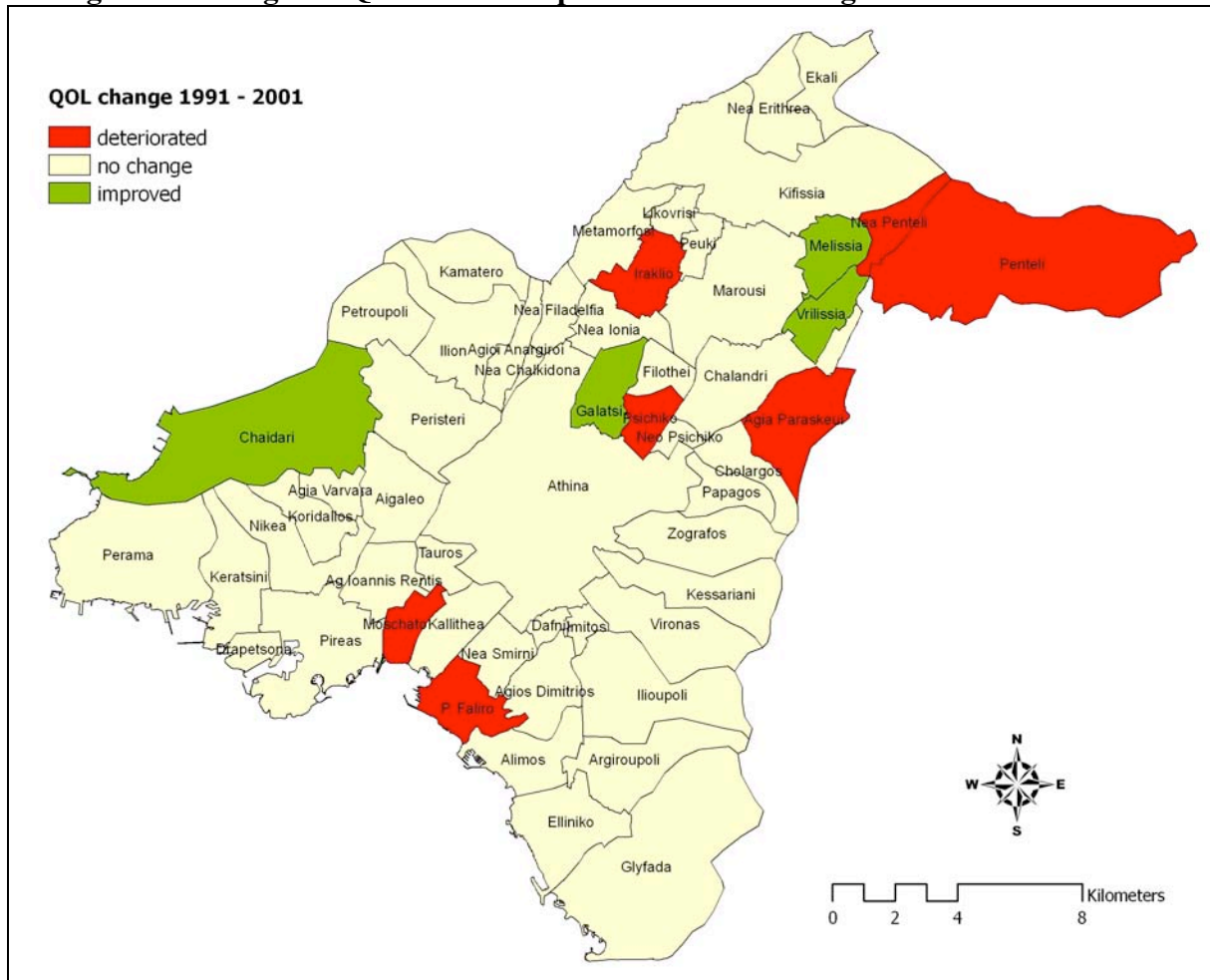
found that life quality degradation was caused by a noticeable increase in the unemployment rate and decrease in the percentage of employers.

**Figure 3. Quality of life maps for metropolitan Athens in 1991 and 2001.**





**Figure 4. Changes in QOL for metropolitan Athens during the decade 1991-2001.**



Taking into consideration all QOL changes that occurred during this period, it can be concluded that more municipalities appeared to have higher levels of QOL in 1991 than in 2001. In particular, in 1991, good and high levels of quality of life were measured at nine municipalities, whereas low quality of life was measured at fourteen ones. However, in 2001, good and high levels of QOL were observed at eight municipalities, while fourteen presented low QOL levels. During the decade 1991 – 2001, four municipalities improved their quality of life, forty-four municipalities presented no change in their quality of life and only at seven municipalities quality of life was deteriorated. Both in 1991 and 2001, the higher levels of life quality were mainly associated with municipalities of the N/NA/NW suburbs of Athens due to better physical environment, high education level and percentage of employers and low unemployment rate. On the other hand, the lower levels of QOL were associated with municipalities of the central and W suburbs of Athens as well as of SW suburbs of the Piraeus prefecture resulting from poor physical environment, low education level, high population density, high unemployment and low percentage of employers.

Results of this study were considered satisfactory, in the sense that the aggregated index could effectively provide an evaluation measurement and mapping of the urban life quality, which is helpful for identifying areas where QOL needs to be improved through sustainable design. Moreover, the index could effectively highlight those indicators which could be held responsible for a measured QOL level. Certainly, the use of more data would favor the more accurate determination of the QOL. The number of the physical and socio-economic indicators used in this study for QOL assessment (total number of 8), cannot ensure an absolute determination of the quality of life but only a good approximation of it, as QOL is

assessed based on specific indicators that, although they play an important role in life quality, they consist only a small part of the physical and socio-economic profile of an urban area. Therefore, for a more reliable and accurate determination of QOL, the utilization of more indicators is suggested so as more aspects of everyday living such as household finances, personal security, accessibility to services, median home value, air pollution, level of crime road traffic etc. may be considered, leading to a more objective assessment of the quality of life level.

## References

- Chander Gyanesh, and Briam Markham. 2003. *Revised Landsat-5 TM radiometric calibration procedures and postcalibration dynamic ranges*. IEEE Transactions on Geoscience and Remote Sensing, vol. 41, pp. 2674–2677.
- Kidwell, B., Katherine. 1990. *Global Vegetation Index User's Guide*. U.S. Department of Commerce/National Oceanic and Atmospheric Administration/National Environmental Satellite Data and Information Service/National Climatic Data Center/Satellite Data Services Division.
- Morton, Peter. 1999. *Quality of Life in Saskatoon 1991 and 1996: A Geographical Perspective*. M.A. Thesis. University of Saskatchewan
- Quality of Life Indicators Project. 2002. *Quality of Life in Canada - A Citizens' Report Card*. Ottawa: Canadian Policy Research Network.
- Santamouris Mattheos, Nikos Papanikolaou, Iro Livada, Ioannis Koronakis, Chrysa Georgakis, Athanasios Argiriou, Dimosthenis Assimakopoulos. 2001. *On the impact of urban climate on the energy consumption of buildings*. Solar Energy, vol. 70, issue 3, Urban Environment, pp. 201-216.
- Stathopoulou Marina, Constantinos Cartalis, Iphigenia Keramitsoglou, and Mattheos Santamouris. 2005. "Thermal remote sensing of Thom's Discomfort Index (DI): comparison with in situ measurements." In *Proceedings of the Remote Sensing 2005 Symposium, (SPIE 2005)*. Brugge, Belgium, 19 September 2005, Vol. 5983 - Environmental Monitoring, GIS Applications, and Geology V, pages 59830K
- Stathopoulou Marina, Constantinos Cartalis, and Nektarios Chrysoulakis. 2006. *Using midday surface temperature to estimate cooling degree-days from NOAA-AVHRR thermal infrared data: An application for Athens, Greece*. Solar Energy, vol. 80, pp. 414–422.
- Stathopoulou Marina, Constantinos Cartalis, and Michael Petrakis. 2007. *Integrating CORINE land cover data and Landsat TM for surface emissivity determination: An application for the urban area of Athens, Greece*. International Journal of Remote Sensing, vol. 28, pp. 3291-3304.
- Stathopoulou Marina and Constantinos Cartalis. 2007. "Study of the urban heat island of Athens, Greece during daytime and night-time." In *Proceedings of the 2007 Urban Remote Sensing Joint Event (IEEE) Conference*. Paris, France, 11-13 April 2007, pp.1-7.